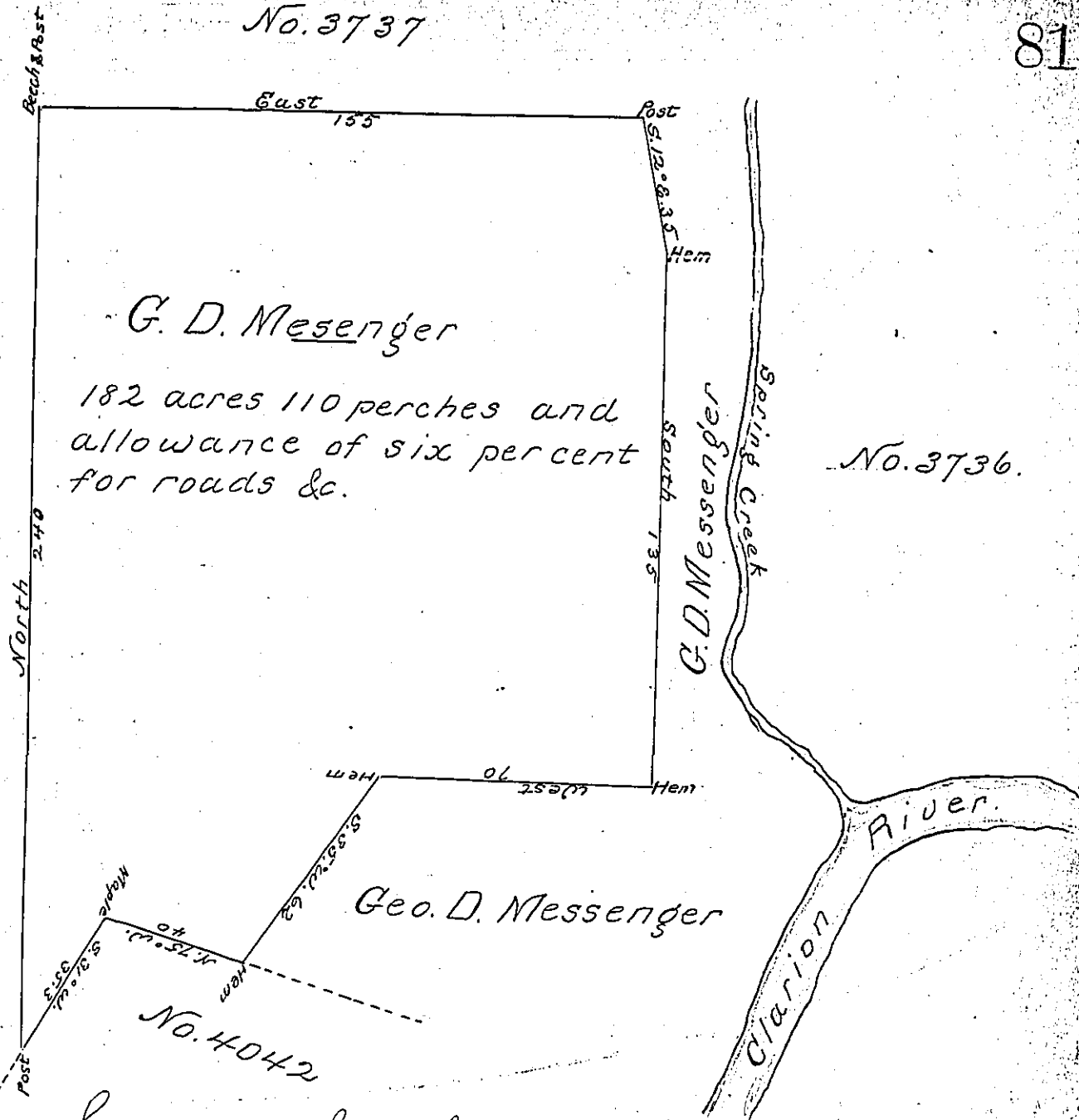


No. 3737

No. 2789

No. 2792



Surveyed the 14th day of August A.D. 1865

one hundred and eighty two acres and one hundred and ^{ten} ~~four~~ perches of land with allowance of six percent for roads &c. on the north side of the Clarion river below the mouth of Spring Creek in Spring Creek Township, Elk County, Penna. bounded on the North by Warrant No. 3737 on the West by Warrants Nos. 2789 & 2792, on the South by Warrant No. 4042 and lands Warranted by G. D. Messenger and on the East by said Messenger's lands. By virtue and in pursuance of a Warrant to George D. Messenger, for one hundred and eighty three acres of land unimproved, dated the eighth day of August A.D. 1865.

George Walmsley
Surveyor for Elk Co., Pa.

To James P. Barr Esq.
Surveyor General.

IN TESTIMONY that the above is a copy of the original remaining on file in the Department of Internal Affairs of Pennsylvania, made conformably to an Act of Assembly approved the 16th day of February, 1833, I have hereunto set my Hand and caused the Seal of said Department to be affixed at Harrisburg, this first day of October 1901

James P. Barr
Secretary of Internal Affairs.